

Sight glass with 4 sight openings and flange connections according to DIN EN 1092-1

USAGE

Flow sight glasses with 2-way connections and 4 viewing openings of type 596 are used to observe the fill level and flow in pipelines. A clear advantage of the version with four viewing openings is that the user receives an almost 360° panoramic view of the process – even at very high operating pressures. This allows the flow of the medium to be optimally observed and the process to be comprehensively controlled. The flow sight glasses of type 596 are designed for installation between flanges according to DIN EN 1092-1.

Operating conditions:

Temperature: (depending on glass and gasket)	150 °C Soda-lime glass DIN 8902 280 °C Borosilicate glass DIN 7080 300 °C or 320 °C ¹ Borosilicate glass DIN 7080 with mica protection discs
Pressure:	≤ 16 / 40 / 63 / 100 / 160 / 250 / 320 / 400 barg

1) Only possible if MAXOS® safety sight glasses according to DIN 7080 are used

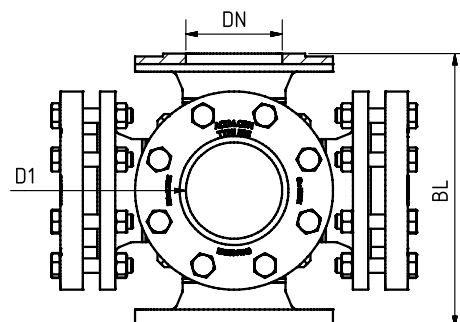
Materials:

Connection flange, cover flange and body:	1.4571
Glass:	Borosilicate glass DIN 7080 Soda-lime glass DIN 8902
Gasket:	Graphite; C4400; PTFE; FKM; NBR; Silicone; EPDM
Screws:	A2-70 / A4-70

INSTALLATION NOTE

Gaskets must always be used that fit the sealing surfaces. The screw material should be equivalent or superior compared to the flange material. Whenever possible, both the screw thread and the screw head should be provided with a suitable lubricant.

DRAWING



DN	50	65	80	100	125	150	200
Total length (BL) ²	DIN EN 558-1 FTF 2						
Flange dimensions	DIN EN 1092-1						
free view (D1) ²	55	70	83	107	132	159	207

2) All dimensions are executed – as far as constructionally possible – according to the standard. Otherwise, the information from the order confirmation and customer drawing applies.

Dimensions correspond to the nominal pressure level PN 16, other pressure levels may differ

PRODUCT CODE

Example for Explaining the Code Composition

11 - 596 - 8 - 2 - 1 - 1 - 4 - 000

GROUP	TYPE	DN	PN	BODY	GLASS	GASKET	VARIANT
11	596	5) 50	1) 16	1) 1.4571	1) Borosilicate glass DIN 7080	1) PTFE	000) Standard
		6) 65	2) 40	8) Special	2) Soda-lime glass DIN 8902	2) FKM	
		7) 80	3) 63		4) Borosilicate glass DIN 7080 + Mica	3) NBR	
		8) 100	4) 100		5) META® glass	4) C4400	
		9) 125	5) 160			5) Silicone	
		10) 150	6) 250			6) EPDM	
		11) 200	7) 320			7) Graphite	
		12) Special	8) 400			8) Special	



Unless otherwise stated, the highlighted factory standard will be delivered.

EXAMPLE

The product code **11-596-8-2-1-1-4-000**

corresponds to the standard version:

ACI type 596

DN 100

PN 40

Body 1.4571

Cover flanges 1.4571

Connection flanges 1.4571

Borosilicate glass DIN 7080

Gasket KlingerSil® C4400

QUICK OVERVIEW



max. 400 barg



temperature resistant up
to 320 °C



for liquid media



for gaseous media



Nominal sizes
DN 50 - 200



Custom made
constructions possible



> 50 sealing materials



Accessories available

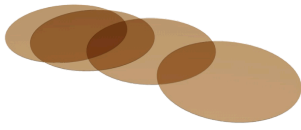
OPERATING CONDITIONS

Operating conditions depend on the choice of glass and seals:

		SIGHT GLASS				GASKETS				
		Soda-lime glass DIN 8902	Borosilicate glass DIN 7080	PTFE max. 200 °C	FKM max. 200 °C	NBR max. 80 °C	C4400 max. 175 °C	Silicone max. 180 °C	EPDM max. 130 °C	Graphite > 400 °C
TEMPERATURE	up to 80 °C	✓	✓	✓	✓	✓	✓	✓	✓	✓
	up to 130 °C	✓	✓	✓	✓	✗	✓	✓	✓	✓
	up to 150 °C	✓	✓	✓	✓	✗	✓	✓	✗	✓
	up to 175 °C	✗	✓	✓	✓	✗	✓	✓	✗	✓
	up to 200 °C	✗	✓	✓	✓	✗	✗	✗	✗	✓
	up to 280 °C	✗	✓	✗	✗	✗	✗	✗	✗	✓
	> 280 °C	On request								
PRESSURE	up to 16 barg	✓	✓	✓	✓	✓	✓	✓	✓	✓
	up to 40 barg	✓	✓	✓	✗	✗	✓	✗	✗	✓
	up to 63 barg	✗	✓	✗	✗	✗	✗	✗	✗	✓
	up to 100 barg	✗	✓	✗	✗	✗	✗	✗	✗	✓
	up to 160 barg	✗	✓	✗	✗	✗	✗	✗	✗	✓
	up to 250 barg	✗	✓	✗	✗	✗	✗	✗	✗	✓
	up to 320 barg	✗	✓	✗	✗	✗	✗	✗	✗	✓
	up to 400 barg	✗	✓	✗	✗	✗	✗	✗	✗	✓

✓ suitable ✗ unsuitable

OPTIONAL ACCESSORIES



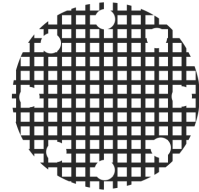
Round mica discs

- > up to 320 °C with Borosilicate glass
DIN 7080

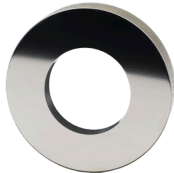


Sight glass wiper

- > with PTFE, silicone, EPDM or FKM
wipers



Grid impact protection window



Metal fused safety sight glass

- > for safety applications



LED lights

- > for Ex and non-Ex areas



FEP protective screen / coating

- > for high pH values



For aggressive media or steam, mica discs should be used to protect the glasses.

NOTE !



The pressure-temperature limits apply according to DIN EN 1092-1!

Our tool with the same name is available on our website.
(www.aci24.com, under Service, sub-item Tools)



ACI Industriearmaturen GmbH

✉ info@aci24.com

☎ +49 (0) 2461 91634 00

🌐 www.aci24.com

☎ +49 (0) 2461 91634 44

📍 Königskamp 19 · 52428 Jülich · Germany