



Suitable for clamp connection according to DIN 32676

USAGE

Sight glasses for clamp connections serve to observe or illuminate the interior of closed containers or pipes. The sight glass can be directly mounted to a clamp socket according to DIN 32676. The sealing against the flange is achieved via a gasket, minimizing dead spaces with the flat supporting surface.

Operating condition

Temperature: (dependent on glass and gasket)	-30 °C to 280 °C (1.4462)
	-60 °C to 300 °C (2.4602 and 2.4610)
Pressure:	≤ -1 ¹ barg to 16 ² barg

- 1) Dependent on environmental variables
- 2) Dependent on the nominal size

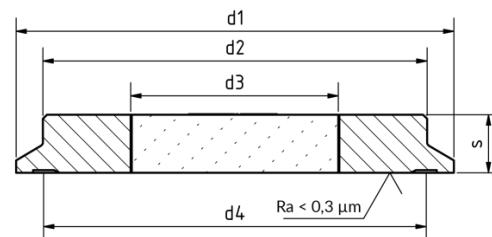
Materials

Ring material:	1.4462; 2.4602; 2.4610
Glass:	Borosilicate glass DIN 7080/7079

INSTALLATION NOTE

Before mounting, the sealing surfaces of the sight glass and the clamp connection must be free of contamination and errors.

DRAWING



DN	10	15	20	25	32	40	50	65	80	100	125	150	200	250	300
d1 [mm]	34	34	34	50.5	50.5	50.5	64	91	106	119	155	183	233.5	287.5	338.3
d2 [mm]	23	23	23	41	41	41	52	76	90	101	138	160	210	266	316
d3 [mm]	14	14	14	25	25	25	30	40	50	55	70	80	100	140	150
d4 [mm]	27.5	27.5	27.5	43.5	43.5	43.5	56.5	83.5	97	110	146	174.3	225.1	278.4	328.4
s [mm]	8	8	8	10	10	10	10	10	10	12	16	16	18	22	22
Pmax [barg]	16	16	16	16	16	16	16	10	10	10	6	6	6	6	6

PRODUCT CODE

Example for Explaining the Code Composition

11 - 328 - 150 - 1 - 000

GROUP	TYPE	NOMINAL SIZE	RING MATERIAL	VARIANT
11	328	DN 10	1) 1.4462	000) Standard
		DN 15	2) 2.4602	
		DN 20	3) 2.4610	
		DN 25		
		DN 32		
		DN 40		
		DN 50		
		DN 65		
		DN 80		
		DN 100		
		DN 125		
		DN 150		
		DN 200		
		DN 250		
		DN 300		

Unless otherwise specified, the highlighted factory standard will be delivered.



EXAMPLE

The product code 11-328-150-1-000 corresponds to the standard version:

ACI Type 328

DN 150

PN 6

Ring material made of 1.4462



QUICK OVERVIEW



up to 16 barg



heat resistant up to 300 °C



for liquid media



for gaseous media



Nominal sizes DN 10 - 300



Custom made designs available



Accessories available



sterile technical design

OPERATING CONDITIONS

Operating conditions depend on the choice of glass and the gaskets:

		SIGHT GLASS	GASKETS				
		Borosilicate glass (DIN7080/7079)	PTFE max. 200 °C	FKM max. 200 °C	NBR max. 80 °C	Silicone max. 180 °C	EPDM max. 130 °C
TEMPERATURE	up to 80 °C	✓	✓	✓	✓	✓	✓
	up to 130 °C	✓	✓	✓	✗	✓	✓
	up to 180 °C	✓	✓	✓	✗	✓	✗
PRESSURE	up to 200 °C	✓	✓	✓	✗	✗	✗
	up to 6 barg	✓	✓	✓	✓	✓	✓
	up to 10 barg	✓	✓	✓	✓	✓	✓
	up to 16 barg	✓	✓	✓	✓	✓	✓

✓ suitable ✗ unsuitable

OPTIONAL ACCESSORIES



Sight glass wiper



Sealing ring



Bracket

- > with PTFE, silicone, EPDM or FKM wipers



LED lights

- > for Ex and non-Ex areas