



Oval design with a 50 mm wide viewing window

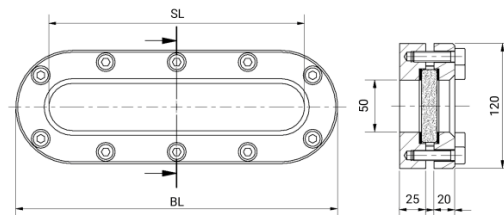
USAGE

Longitudinal sight glass fittings serve to observe and illuminate the interior of closed containers (boilers, tanks, silos, etc.). Sight glass fittings of type 338 are oval longitudinal sight glass fittings for welding in or onto, completed with a sight glass plate inserted and securely screwed between the gaskets.

INSTALLATION NOTE

After welding the base frame, it must be checked whether the sealing surface has warped. If necessary, it must be reworked! Please also observe the specified torque values for the bolting, in accordance with the operating and maintenance instructions! The working pressure does not apply to the base frame; this must be checked together with the pressure device according to AD2000 Leaflet B9!

DRAWING



Operational Condition		
Temperature: (depending on glass and gasket)	≤ 280 °C	Borosilicate glass transparent similar to DIN 7081
	> 280 °C	upon request
Pressure:	≤ 16 barg	

Materials	
Base frame:	1.4571; 1.4404
Glass:	Borosilicate glass transparent similar to DIN 7081
Gasket ¹⁾ :	PTFE; FKM; NBR; C4400; Silicone; EPDM; Graphite
Screws:	A2-70 / A4-70
Special materials on request	

1) See "INFO Gaskets"

BL [mm]	270	340	410	480	550	620
SL [mm]	200	270	340	410	480	550
Weight [kg]	7.2	9.0	10.9	12.7	14.5	16.3

PRODUCT CODE

Example for Explaining the Code Composition

11 - 338 - 480 - 2 - 1 - 4 - 000

GROUP	TYPE	LENGTH	BASE FRAME ¹	GLASS	GASKET	VARIANT
11	338	270	2) 1.4571	1) Borosilicate glass transparent similar to DIN 7081	1) PTFE	000) Standard
		340	3) 1.4404	6) Custom made design	2) FKM	
		410	8) Custom made design		3) NBR	
		480			4) C4400	
		550			5) Silicone	
		620			6) EPDM	
					7) Graphite	
					8) Custom made design	

1) Cover frame according to quote / order confirmation

Unless otherwise specified, the highlighted factory standard will be delivered.



EXAMPLE

The product code **11-338-480-2-1-4-000** corresponds to the standard version:

ACI type 338

480 mm long

PN 16

Base frame made of 1.4571

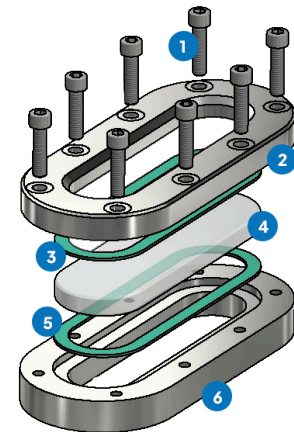
Cover frame made of 1.4571

Borosilicate glass transparent, similar to DIN 7081

Gasket KlingerSil® C4400

STRUCTURE

1. Screws
2. Cover frame
3. Glass cushion
4. Sight glass
5. Gasket
6. Base frame



For aggressive media, FEP or Halar® coated sight glass plates can be used. In case of steam, mica discs should be used to protect the glasses.

QUICK OVERVIEW



max. 16 barg



heat resistant up to 280 °C



for liquid media



for gaseous media



face to face
270 - 620 mm



Custom made designs possible



> 50 gasket materials



Accessories available

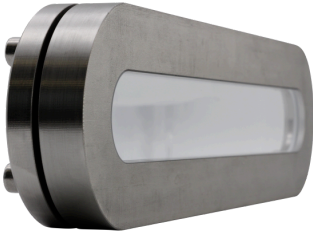
OPERATING CONDITIONS

TERMS OF SERVICE: Terms of service depend on the choice of glass and gaskets:

		VIEWING GLASS	GASKETS							
		Borosilicate glass transparent similar to DIN 7081	PTFE max. 200 °C	FKM max. 200 °C	NBR max. 80 °C	C4400 max. 175 °C	Silicone max. 180 °C	EPDM max. 130 °C	Graphite > 400 °C	
TEMPERATURE	up to 80 °C	✔	✔	✔	✔	✔	✔	✔	✔	
	up to 130 °C	✔	✔	✔	✘	✔	✔	✔	✔	
	up to 150 °C	✔	✔	✔	✘	✔	✔	✘	✔	
	up to 175 °C	✔	✔	✔	✘	✔	✔	✘	✔	
	up to 200 °C	✔	✔	✔	✘	✘	✘	✘	✔	
	up to 280 °C	✔	✘	✘	✘	✘	✘	✘	✔	
PRESSURE	>280 °C	upon request		upon request						
	up to 16 barg	✔	✔	✔	✔	✔	✔	✔	✔	

✔ suitable ✘ unsuitable

OPTIONAL ACCESSORIES



Nearly dead space-free design

> with Stepped glass



FEP protective screen / coating

> for high pH values