



Light execution with a 50 mm wide viewing window

USAGE

Longitudinal sight glass fittings serve to observe and illuminate the interior of closed containers (boilers, tanks, silos, etc.). Sight glass fittings of type 334 are rectangular longitudinal sight glass fittings for welding in or onto, completed with an embedded and securely screwed sight glass plate placed between the gaskets.

Operating Condition

Temperature: (depending on glass and gasket)	≤ 280 °C	Borosilicate glass transparent similar to DIN 7081
	> 280 °C	on request
Pressure:	≤ 3 barg	

Materials

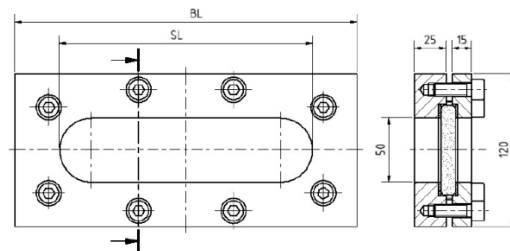
Base frame:	1.4571; 1.4404
Glass:	Borosilicate glass transparent similar to DIN 7081
Gasket ¹⁾ :	PTFE; FKM; NBR; C4400; Silicone; EPDM; Graphite
Screws:	A2-70 / A4-70
Special materials available upon request	

1) See "INFO Gaskets"

INSTALLATION NOTE

After welding the base frame, it must be checked whether the sealing surface has warped. If necessary, this must be reworked! Also, pay attention to the specified tightening torques for the bolting, according to the operating and maintenance instructions! The working pressure does not apply to the base frame; this must be checked along with the pressure device according to AD2000 Leaflet B9!

DRAWING



BL [mm]	270	340	410	480	550	620	690	760
SL [mm]	200	270	340	410	480	550	620	690
Weight [kg]	7,4	9,0	10,6	12,2	13,8	15,4	17,0	18,6

PRODUCT CODE

Example for Explaining the Code Composition

11 - 334 - 550 - 2 - 1 - 4 - 000

GROUP	TYPE	LENGTH	BASE FRAME ¹	GLASS	GASKET	VARIANT
11	334	270	2) 1.4571	1) Borosilicate glass transparent similar to DIN 7081	1) PTFE	000) Standard
		340	3) 1.4404	6) Custom made design	2) FKM	
		410	8) Custom made design		3) NBR	
		480			4) C4400	
		550			5) Silicone	
		620			6) EPDM	
		690			7) Graphite	
		760			8) Custom made design	

1) Cover frame according to the offer / order confirmation



Unless otherwise stated, the highlighted factory standard will be delivered.

EXAMPLE

The product code **11-334-550-2-1-4-000** corresponds to the standard version:

ACI type 334

550 mm long

PN 3

Base frame made of 1.4571

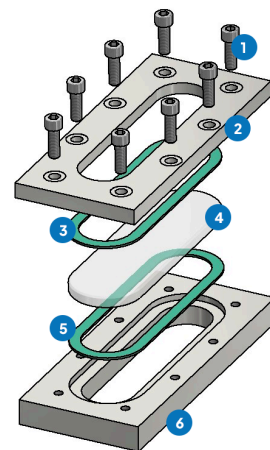
Cover frame made of 1.4571

Borosilicate glass transparent, similar to DIN 7081

Gasket KlingerSil® C4400

STRUCTURE

1. Screws
2. Cover frame
3. Glass cushion
4. Sight glass
5. Gasket
6. Base frame



For aggressive media, FEP or Halar® coated sight glass plates can be used. With steam, mica discs should be used to protect the glasses.

QUICK OVERVIEW



max. 3 barg



heat resistant up to 280
°C



for liquid media



for gaseous media



Total length
270 - 760 mm



Custom made design
possible



> 50 gasket materials



Accessories available

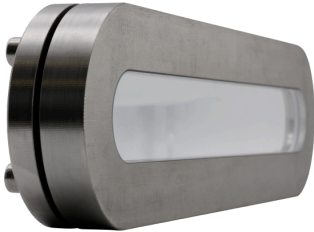
OPERATING CONDITIONS

TERMS AND CONDITIONS: Terms and conditions depend on the choice of glass and the gaskets:

		SIGHT GLASS		GASKETS					
		Borosilicate glass transparent similar to DIN 7081	PTFE max. 200 °C	FKM max. 200 °C	NBR max. 80 °C	C4400 max. 175 °C	Silicone max. 180 °C	EPDM max. 130 °C	Graphite > 400 °C
TEMPERATURE	up to 80 °C	✓	✓	✓	✓	✓	✓	✓	✓
	up to 130 °C	✓	✓	✓	✗	✓	✓	✓	✓
	up to 150 °C	✓	✓	✓	✗	✓	✓	✗	✓
	up to 175 °C	✓	✓	✓	✗	✓	✓	✗	✓
	up to 200 °C	✓	✓	✓	✗	✗	✗	✗	✓
	up to 280 °C	✓	✗	✗	✗	✗	✗	✗	✓
	>280 °C	on request	on request						
PRESSURE	up to 3 barg	✓	✓	✓	✓	✓	✓	✓	✓

✓ suitable ✗ unsuitable

OPTIONAL ACCESSORIES



Nearly dead space-free design

> with Stepped glass



FEP protective screen / coating

> for high pH values