

With flange connections to DIN EN 1759-1 fit on mating flanges to ASME B 16.5

USAGE

Flow sight glasses of type 530 serve to observe the level and flow in pipelines.

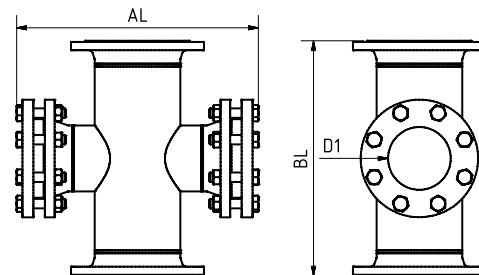
They enable reliable monitoring of the function and performance of individual devices as well as complete systems. The flow sight glasses of type 530 are designed for installation between flanges according to DIN EN 1092-1.

Pipelines that must be completely emptied have a residual liquid in the sight glass area with standard sight glasses. With this sight glass fitting, there is virtually no residual liquid left in the housing when installed horizontally.

INSTALLATION NOTE

Seals should always be used that fit the sealing surfaces. The screw material should be equal or of higher quality compared to the flange material. Whenever possible, both the screw thread and the screw head should be provided with a suitable lubricant.

DRAWING



Operating conditions:

Temperature: (depending on glass and gasket)	150 °C Soda-lime glass DIN 8902 280 °C Borosilicate glass DIN 7080 300 °C or 320 °C ¹ Borosilicate glass DIN 7080 with mica protection discs
Pressure:	≤ 10 / 16 / 25 / 40 / 63 barg ²

1) Only possible if MAXOS® safety sight glasses are used according to DIN 7080

2) Higher, see type 520

Materials:

Connection flange, cover flange and body:	1.4571
Glass:	Borosilicate glass DIN 7080 Soda-lime glass DIN 8902
Gasket:	Graphite; C4400; PTFE; FKM; NBR; silicone; EPDM
Screws:	A2-70 / A4-70
Special materials on request	

PN	DN	BL ³	D1 ³	AL ³
10	25	160	22	284
	40	200	35	261
	50	230	45	262
	80	310	55	337
	100	350	84	372
	125	400	107	422
	150	480	132	462
	200	600	160	570
	250	730	160	641
	300	850	160	693
	350	980	160	741
	400	1100	160	792
16	25	160	22	285
	40	200	35	260
	50	230	45	260
	80	310	55	340
	100	350	84	380
	125	400	107	420
	150	480	132	470
	200	600	160	580
	250	730	160	650
	300	850	160	700
	350	980	160	750
	400	1100	160	800
25	25	160	22	284
	40	200	35	261
	50	230	45	272
	80	310	55	347
	100	350	84	392
	125	400	107	432
	150	480	132	482
	200	600	160	610
	250	730	160	681
	300	850	160	733
	350	980	160	781
	400	1100	160	832

PN	DN	BL ²	D1 ²	AL ²
40	25	160	22	284
	40	200	35	271
	50	230	45	272
	80	310	55	357
	100 ⁴	350	84	402
	125 ⁴	400	107	452
	150 ⁴	480	132	502
	200 ⁴	600	160	610
	250 ⁴	730	160	681
	300 ⁴	850	160	733
	350 ⁴	980	160	781
	400 ⁴	1100	160	832
	63	25	160	22
40		200	35	349
50		230	45	352
80		310	55	417
100 ⁴		350	84	448
125 ⁴		400	107	500
150 ⁴		480	132	598
200 ⁴		600	160	696
250 ⁴		730	160	767
300 ⁴		850	160	867
350 ⁴		980	160	819
400 ⁴		1100	160	918

3) All measurements will be executed according to standard as far as constructively possible. Otherwise, the details from the order confirmation and customer drawing apply.

4) Departing from the printing temperature limits according to DIN EN 1092-1.

PRODUCT CODE

Example for Explaining the Code Composition

11 - 530 - 100 - 1 - 1 - 1 - 4 - 000

GROUP	TYPE	DN	PN	BODY	GLASS	GASKET	VARIANT
11	530	25	0) 10	1) 1.4571	1) Borosilicate glass DIN 7080	1) PTFE	000) Standard
		40	1) 16	4) Special	2) Soda-lime glass DIN 8902	2) FKM	
		50	2) 25		4) Borosilicate glass DIN 7080	3) NBR	
		80	3) 40		+ Mica	4) C4400	
		100	4) 63		6) META® glass	5) Silicone	
		125				6) EPDM	
		150				7) Graphite	
		200				8) Special	
		250					
		300					
		350					
		400					



Unless otherwise specified, the highlighted factory standard is delivered.

EXAMPLE

The product code **11-530-100-1-1-1-4-000** corresponds to the standard version:

ACI Type 530

DN 100

PN 16

Body 1.4571

Cover flanges 1.4571

Connection flanges 1.4571

Borosilicate glass DIN 7080

Gasket KlingerSil® C4400

QUICK OVERVIEW



max. 63 barg



heat-resistant up to 320
°C



for liquid media



for gaseous media



Nominal sizes
DN 25 - 400



Custom designs possible



> 50 sealing materials



Accessories available

OPERATING CONDITIONS

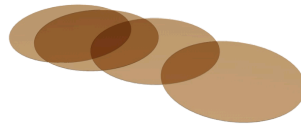
		SIGHT GLASS					GASKETS			
		Soda-lime-glass DIN 8902	Borosilicate glass DIN 7080	PTFE max. 200 °C	FKM max. 200 °C	NBR max. 80 °C	C4400 max. 175 °C	Silicone max. 180 °C	EPDM max. 130 °C	Graphite > 400 °C
TEMPERATURE	up to 80 °C	✓	✓	✓	✓	✓	✓	✓	✓	✓
	up to 130 °C	✓	✓	✓	✓	✗	✓	✓	✓	✓
	up to 150 °C	✓	✓	✓	✓	✗	✓	✓	✗	✓
	up to 175 °C	✗	✓	✓	✓	✗	✓	✓	✗	✓
	up to 200 °C	✗	✓	✓	✓	✗	✗	✗	✗	✓
	up to 280 °C	✗	✓	✗	✗	✗	✗	✗	✗	✓
	> 280 °C	On request		On request						
PRESSURE	up to 10 barg	✓	✓	✓	✓	✓	✓	✓	✓	✓
	up to 16 barg	✓	✓	✓	✓	✓	✓	✓	✓	✓
	up to 25 barg	✓	✓	✓	✗	✗	✓	✗	✗	✓
	up to 40 barg	✓	✓	✓	✗	✗	✓	✗	✗	✓
	up to 63 barg	✗	✓	✗	✗	✗	✗	✗	✗	✓

✓ suitable ✗ unsuitable

OPTIONAL ACCESSORIES



Double glazing



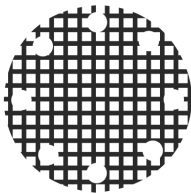
Round mica discs

- > up to 320 °C with Borosilicate glass
DIN 7080

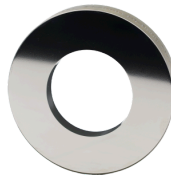


Sight glass wiper

- > with PTFE, silicone, EPDM or FKM
wipers



Grid impact protection window



Metal fused safety sight glass

- > for safety applications




LED lights

- > for Ex and non-Ex areas



FEP protective screen / coating

- > for high pH values

 For aggressive media, FEP or Halar® coated sight glass plates can be used. In steam, mica discs should be used to protect the glasses.