



With threaded connection according to DIN EN ISO 228-1

USAGE

The sight glass fittings type 392 with screw joints are suitable for screwing into pipelines, boilers, tanks, and equipment of all kinds. The areas of application are available wherever visual inspections of filling or flow are required. They are suitable for liquids and gases alike. The sight glass fittings are particularly recommended for special constructions in different areas of application.

Operating condition

Temperature: (depending on glass and gasket)	≤ 280 °C	Borosilicate glass (DIN 7080 or similar)
Pressure:	≤ 16 barg to 160 barg	
Higher pressures available upon request		
Low temperature usage and higher temperatures / pressures available upon request		

Materials

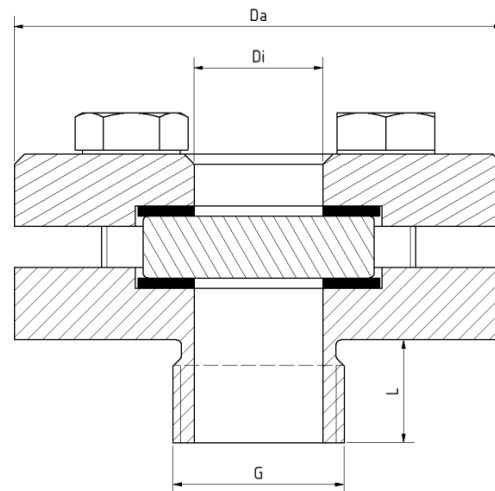
Base flange:	1.4571; 1.4404
Glass:	Borosilicate glass (DIN 7080 or similar)
Gasket ¹⁾ :	PTFE; FKM; NBR; C4400; Silicone; EPDM; Graphite
Screws:	A2-70 / A4-70
Special materials upon request	

1) See „INFO Gaskets“

INSTALLATION NOTE

The connection must be sealed with appropriate sealing material to achieve the specified pressure rating. The connection thread is not self-sealing!

DRAWING



PN	G	Da [mm]	Di [mm]	L [mm]	Weight [kg]
16	½"	70	15	20	0,7
	1"	95	25	20	1,4
	1½"	110	40	20	2,1
	2"	110	40	20	2,1
40	½"	70	15	20	0,7
	1"	like PN 63			
	1½"	110	40	20	2,1
	2"	110	40	20	2,1
63	½"	95	15	20	1,3
	1"	95	25	20	1,5
	1"	like PN 100			
	2"	like PN 100			
100	½"	70	15	20	0,7
	1"	95	25	20	1,5
	1½"	110	40	20	2,2
	2"	110	40	20	2,2
160	½"	70	15	20	0,7
	1"	95	25	20	1,7
	1½"	110	40	20	2,6
	2"	110	40	20	2,6
Other sizes and pressure levels upon request					
Installation via hook wrench as for DIN 11851					

PRODUCT CODE

Example for Explaining the Code Composition

11 - 392 - 2 - 1 - 2 - 1 - 4 - 0

GROUP	TYPE	G	PN	BASE FLANGE ¹	GLASS	GASKET	VARIANT
11	392	1) ½"	1) 16	1) 1.4404	1) Borosilicate glass according to DIN 7080 or similar	1) PTFE	Standard
		2) 1"	2) 40	2) 1.4571		2) FKM	
		3) 1½"	3) 63	3) Special	4) Borosilicate glass ² + PTFE wiper SGW	3) NBR	
		4) 2"	4) 100		5) Borosilicate glass ² + silicone wiper SGW	4) C4400	
		5) Special	5) 160			5) Silicone	
		6) Special	6) Special			6) EPDM	
						7) Graphite	
						8) Special	

1) Cover flange according to quote / order confirmation
2) Similar to DIN 7080

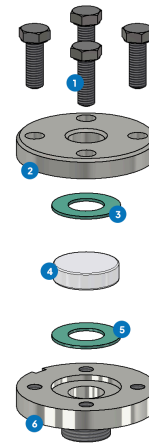
i Unless otherwise specified, the highlighted factory standard will be delivered.

EXAMPLE

The product code **11-392-2-1-2-1-4-0** corresponds to the standard version:
ACI type 392
Thread G 1"
PN 16
Base flange made of 1.4571
Cover flange made of 1.4571
Borosilicate glass (DIN 7080 or similar)
Gasket KlingerSil® C4400

STRUCTURE

1. Screws
2. Cover flange
3. Glass cushion
4. Sight glass
5. Gasket
6. Base flange with threaded connection



💡 For aggressive media, FEP or Halar® coated sight glasses can be used. In case of steam, mica discs should be used to protect the glasses.

QUICK OVERVIEW



max. 160 barg



temperature resistant up to 280 °C



for liquid media



for gaseous media



Nominal sizes ½" - 2"



Custom manufacturing possible



> 50 sealing materials



Accessories available

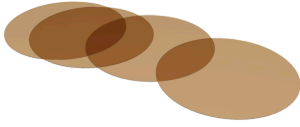
OPERATING CONDITIONS

Operating conditions depend on the choice of glass and gaskets:

		Sight glass		Gaskets					
		Borosilicate glass (DIN 7080 or similar)	PTFE max. 200 °C	FKM max. 200 °C	NBR max. 80 °C	C4400 max. 175 °C	Silicone max. 180 °C	EPDM max. 130 °C	Graphite > 400 °C
TEMPERATURE	up to 80 °C	✓	✓	✓	✓	✓	✓	✓	✓
	up to 130 °C	✓	✓	✓	✗	✓	✓	✓	✓
	up to 175 °C	✓	✓	✓	✗	✓	✓	✗	✓
	up to 200 °C	✓	✓	✓	✗	✗	✗	✗	✓
	up to 280 °C	✓	✗	✗	✗	✗	✗	✗	✓
PRESSURE	up to 16 barg	✓	✓	✓	✓	✓	✓	✓	✓
	up to 40 barg	✓	✓	✗	✗	✓	✗	✗	✓
	up to 63 barg	✓	✗	✗	✗	✗	✗	✗	✓
	up to 100 barg	✓	✗	✗	✗	✗	✗	✗	✓
	up to 160 barg	✓	✗	✗	✗	✗	✗	✗	✓

✓ suitable ✗ unsuitable

OPTIONAL ACCESSORIES



Round mica discs

- > up to 320 °C with Borosilicate glass
DIN 7080



Sight glass wiper

- > with PTFE, silicone, EPDM or FKM
wipers



FEP protective screen / coating

- > for high pH values